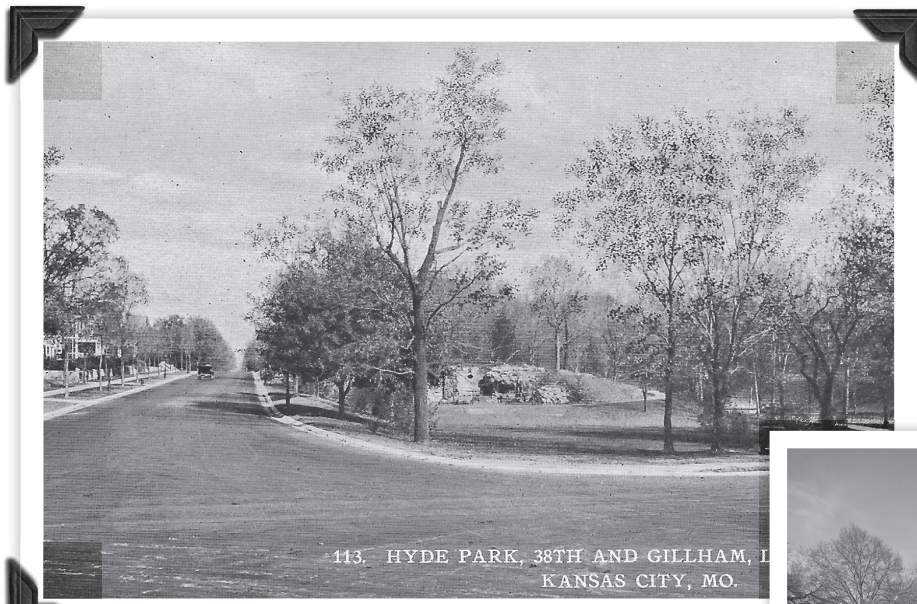


Gillham Road, Looking North from 36th Street, Kansas City, Mo.

BEFORE: This postcard looks further north along Gillham Road from 36th street. The Reid mansion is on the left.



AFTER: The Reid mansion, now Cornerstones of Care, is still visible. Other homes and trees have been replaced by a parking garage and high-rise building, which housed IBM in the 1960s. The high-rise was renovated and reopened in 2017 with 56 luxury apartments, MAC Properties' Kansas City office and several other tenants.



113 HYDE PARK, 38TH AND GILLHAM, KANSAS CITY, MO.

BEFORE: This view of Hyde Park is looking north from the south bound lanes of Gillham Road at 38th Street. The postcard is postmarked October 16, 1912



AFTER: The present-day scene is much the same. One of the biggest changes is the addition of new playground equipment. HPNA and KC Parks partnered with KaBoom to bring the new playground to the park in 2016. Over 200 community volunteers came together to build the playground designed especially for children ages 2-5.

Meetings & More

All in person meetings have been cancelled, sign up for HPNA emails for updated meeting info: <https://hydeparkkc.org/subscribe/>

Monthly Meetings –

HPNA Board: Second Mondays, 6:30 p.m.

Neighborhood Meetings: Third Tuesdays, 7:00 p.m.

Crime and Safety: Officers meet with neighbors monthly at 7pm on the last Thursday of the month from Jan-Oct. Currently meetings are being conducted virtually, visit <https://www.facebook.com/hydeparkkc> for log in information on the day of each meeting.

The HP Playgroup: Playgroup has been suspended due to COVID-19. Contact Megan Sawyer for updates megan.m.sawyer@gmail.com.

Your 2021 HPNA Board

President	OPEN		president@hydeparkkc.org
1st Vice President	Troy Batson	913-461-7108	1stv@hydeparkkc.org
2nd Vice President	Maggie Green		2ndvp@hydeparkkc.org
Treasurer	Warren Green		treasurer@hydeparkkc.org
Recording Secretary	Rosalyn Wilson	816-753-5998	recordingsecretary@hydeparkkc.org
Corresponding Secretary	Brynn Brichet	816-933-9632	correspondingsecretary@hydeparkkc.org
Historian	Pat Alley	816-561-1473	historian@hydeparkkc.org
North Area Directors	Anna Arnor Joshua Ressel	816 898 2662	northrep@hydeparkkc.org northrep@hydeparkkc.org
Central Area	Larry Flanagan Harry Katner	469-441-4338	centralrep@hydeparkkc.org centralrep@hydeparkkc.org
South Area Directors	Chris Koch LaVonne Meyer		southrep@hydeparkkc.org southrep@hydeparkkc.org

The Hyde Parker contact information

Editor/Publisher: Lisa Gooden and David Kimmis.
editor@hydeparkkc.org

Ready to join or renew your HPNA Membership? Visit hydeparkkc.org/association. Memberships are for the calendar year and start at \$35/household. Resident dues help cover the costs of neighborhood social events, dumpster days, the Hyde Parker newsletters, website, and landscaping. There are three ways to pay dues:

- Online via a secure transaction using your Visa or Mastercard. Visit <https://hydeparkkc.org/join-the-hpna>
- Directly to any Board member, at any regular meeting
- By mail to HPNA, P.O. 32551, Kansas City, Missouri 64171.

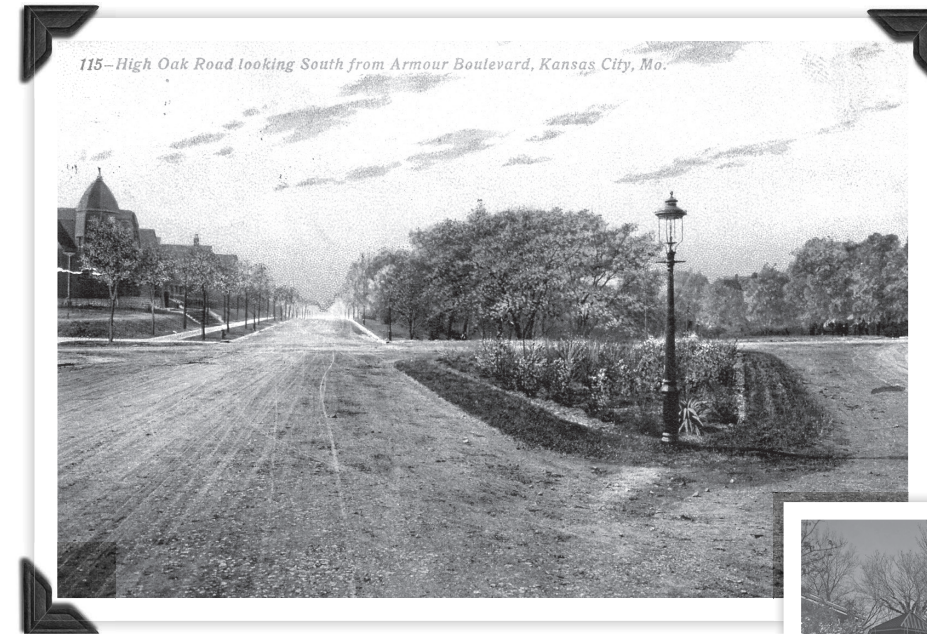
Sign up for HPNA emails to receive the latest neighborhood news!
<https://hydeparkkc.org/subscribe/>

The Hyde Parker is a bi-monthly newsletter published by the Hyde Park Neighborhood Association, Inc.
Hyde Park Neighborhood Assoc. Inc.
P.O. Box 32551
Kansas City, MO 64171

The Hyde Parker

Hyde Park Before and After

(Pat Alley, Hyde Park Historian) The Hyde Park Neighborhood Association is lucky enough to own a collection of early postcards of the area. Most of the postcards were gifts from Mr. Justin and Ms. Erica Grindley in 2011. Recently on a sunny day I took a few of the postcards around the neighborhood and took pictures of the same locations to show how things have changed over the years. Most of the postcards are from the first decade of the 20th century .



115-High Oak Road looking South from Armour Boulevard, Kansas City, Mo.

BEFORE: This postcard is postmarked February 17, 1910. It looks south from 36th Street, the cross street in the foreground. North and south lanes of Gillham Road split to go around Hyde Park and the tennis courts. The house of the left was built in 1890 and the streets are not hard paved, but instead are macadam. Two other things of note are the wonderful gas lighting and the landscaping in the triangle.



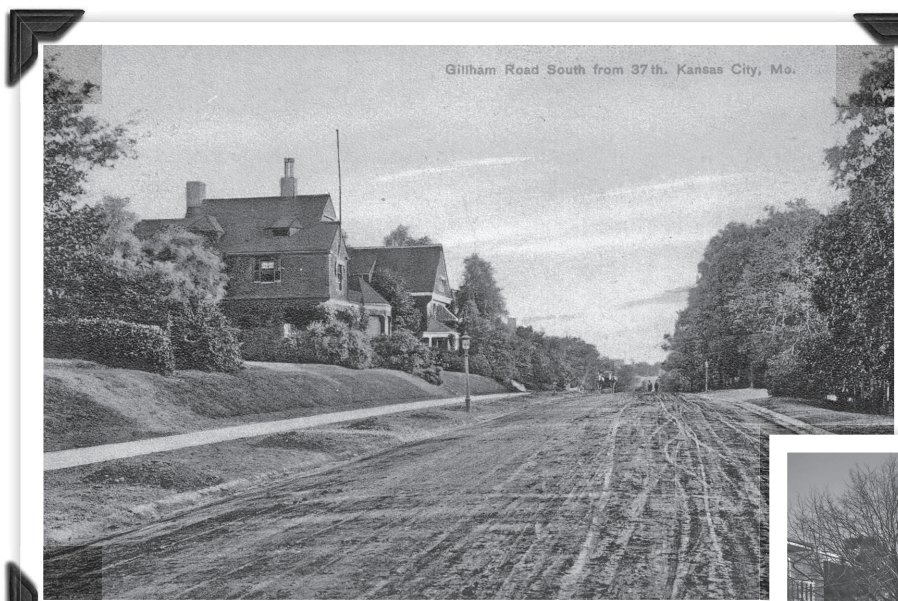
AFTER: The current view (moved south about 30 feet due to construction on 36th Street) shows some changes. The house in the postcard is still there although the roof of the tower is now smaller and less dynamic. This home was rehabbed in the 1990s with funds raised from the Janssen Place Historic Homes Tour for the Historic Kansas City Foundation. (continued on page 2)

Subscribe to HPNA emails to get the latest neighborhood news!

<https://hydeparkkc.org/subscribe/>

HPNA 2021 Survey

Please take a moment to fill out this survey to help the Hyde Park Neighborhood Association and Board in prioritizing goals and areas for impact this year: <http://tinyurl.com/HPNA2021Survey>



BEFORE: This postcard is dated September 6, 1919. The view is about a block further south on Gillham Road from the postcard on page one and shows a row of period homes.



AFTER: In today's picture the older homes are replaced by modern apartment buildings built in the 1960s. One of the interesting things between the two postcards is that the older image referred to the street as High Oak Road and this newer card uses the modern name Gillham Road.



BEFORE: This postcard is dated October 7, 1912. Looking to the north of 36th street and Gillham Road we see the mansion of William Magraw Reid. Built in 1907, the home was patterned after an English house in Wiltshire built in 1675.



AFTER: The Reid mansion became the chancery of the Kansas City-St. Joseph Catholic Diocese in the early 1950s and is currently the offices of Cornerstones of Care. The present view looks much the same except for the landscaping and air conditioning units in the front of the building. The three-story addition and parking lot in back of the building are not visible from this picture.



Give your home the protection it deserves.

Tony Guy, Agent
1100 Walnut, Suite 130
Kansas City, MO 64106
Bus: 816-221-9066
tonyguy.net

Your home is where you make some of your best memories, and that's worth protecting. I'm here to help. LET'S TALK TODAY.



State Farm Fire and Casualty Company, State Farm General Insurance Company, Bloomington, IL
State Farm Florida Insurance Company, Winter Haven, FL
State Farm Lloyds, Richardson, TX
1708136

Ready to Join or Renew your HPNA Membership?

Memberships are for the calendar year and start at \$35/household. Resident dues help cover the costs of neighborhood social events, dumpster days, the Hyde Parker newsletter, website, and special projects such as banners, entrance markers, and landscaping.

Ways to join and pay dues:

- **Online.** Visit <https://hydeparkkc.org/join-the-hpna>
- **By mail** to HPNA, P.O. 32551, Kansas City, Missouri 64171.



Board Selects Audit Committee.

The Audit Committee will audit the 2020 HPNA financials and report to the Board at the March Board meeting and to the general membership at the March general meeting.

The Audit Committee members are:



Feel Better. Live Better

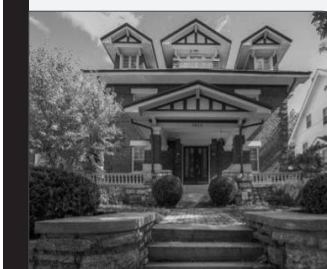
Bring this ad in for a **FREE 15 Minute Massage** with your Initial Chiropractic Visit

4510 Belleview Suite 100
Kansas City, MO 64111
(816)753-4600
www.kansascitychiropractic.com

Pam Gard

ReeceNichols Country Club Plaza Top Agent

April 2020 and December 2020



3655 Campbell St
SOLD



4008 Charlotte St
SOLD



Pam Anderson Gard,
Realtor and Hyde Park Resident
ReeceNichols Country Club Plaza
Pamgard@reecenichols.com



M. 816-729-1241

O. 816-420-5180

School Board Election – April 6, 2021

Hyde Park neighborhoods are represented by school board sub-districts 2 and 4, which are not up for re-election this year. Sub-district 2 includes North and Central Hyde Park and is represented by Nate Hogan. Subdistrict 4 includes South Hyde Park and is represented by Dr. Marvia Jones. The following are candidates for the April 6 election.

Sub-District 1:
Rita Marie Cortes

Sub-District 3:
Manny R. Abarca IV

Sub-District 5:
Kandace Buckner,
Bruce Beatty

At-Large
Pattie Mansur
Tanesha Ford



School Enrollment for 2021–2021

Families can apply to many charter schools through SchoolAppKC at <https://schoolappkc.org>. Applications for non-participating charter schools should be submitted according to the directions on each school's website.

- Submit applications by February 22, 2021
- Receive offers from schools on March 1, 2021 at 4pm
- Select a school by March 8, 2021. Families may choose to remain on waiting lists.
- Applications submitted after the deadline and lotteries will be processed on the first-come first-served basis.

Families can enroll in Kansas City Public Schools neighborhood and signature school programs through EnrollKC at <http://enrollkc.org>.

- Submit enrollment applications by February 15, 2021
- There are no lotteries or waiting lists for neighborhood schools.
- Initial seats for signature programs will be offered – week of March 1, 2021
- Deadline to accept signature seats and complete registration – March 26, 2021
- Signature program applications received after the deadline will be processed on a first come, first-served basis. A second round of seats will be offered starting April 9.

HPNA Volunteer Opportunities

One of the best ways to make a difference in your community is by working together with your neighbors.

Traffic and Parking Committee now forming!

A new committee will be formed this year to focus on traffic and parking issues in Hyde Park. Interested in joining? Please contact Steve Mitchell: stephen.mitchell@lathropgpm.com or 816-550-2687.

Historic Homes Tour 2021 is planned October 2, 2021

Terri Hiebert and Derek Moore will be the co-chairs of this year's tour. Interested in volunteering or having your house on the tour? Contact Derek at derek.matthew.moore@gmail.com.